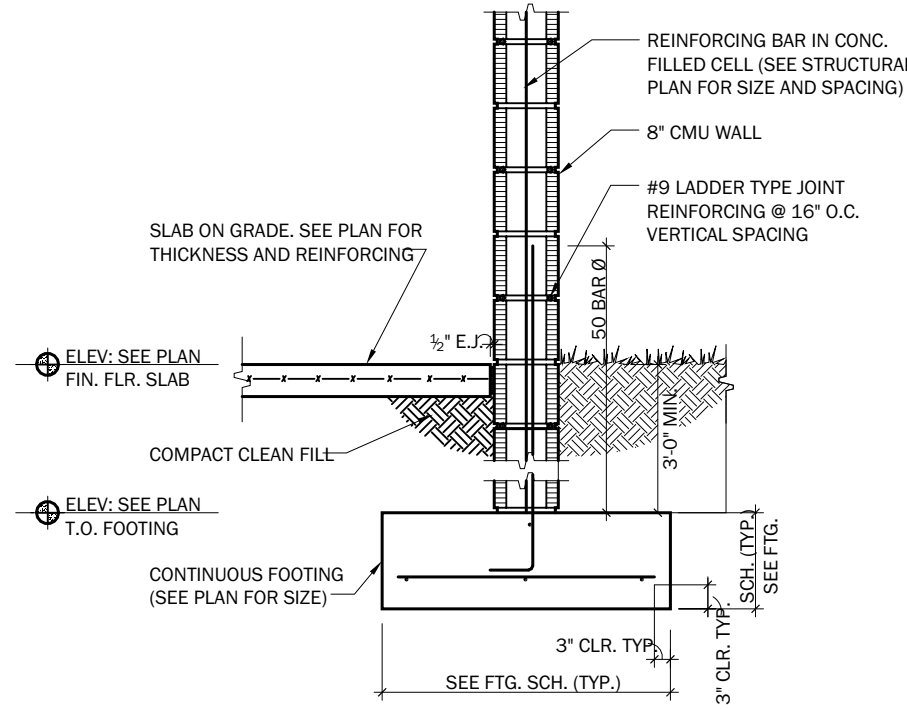


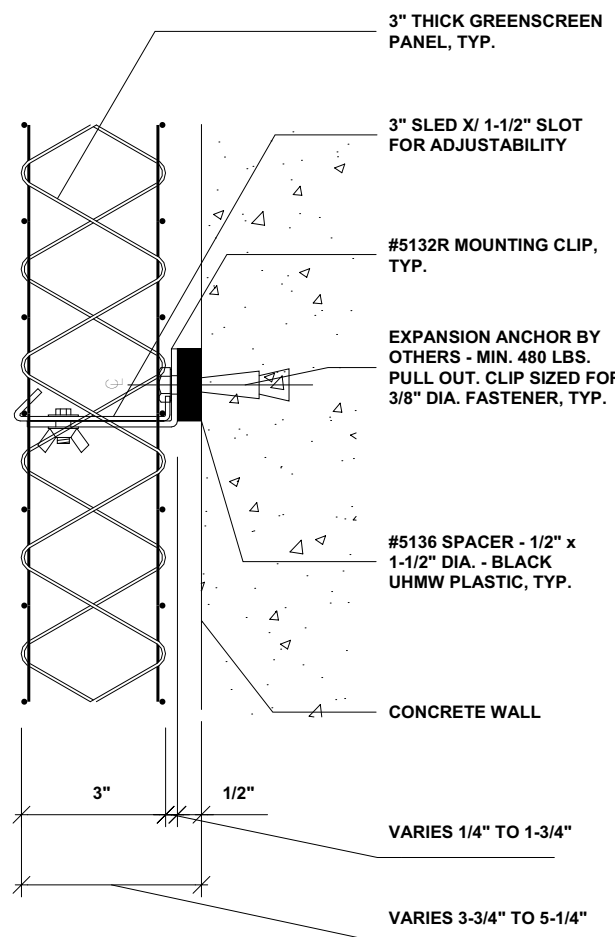
TYP. FOOTING CROSS SECTION DETAIL:



TYP. FOOTING CROSS SECTION  
DETAIL

2  
A2.1 SCALE: 1/2" = 1'-0"

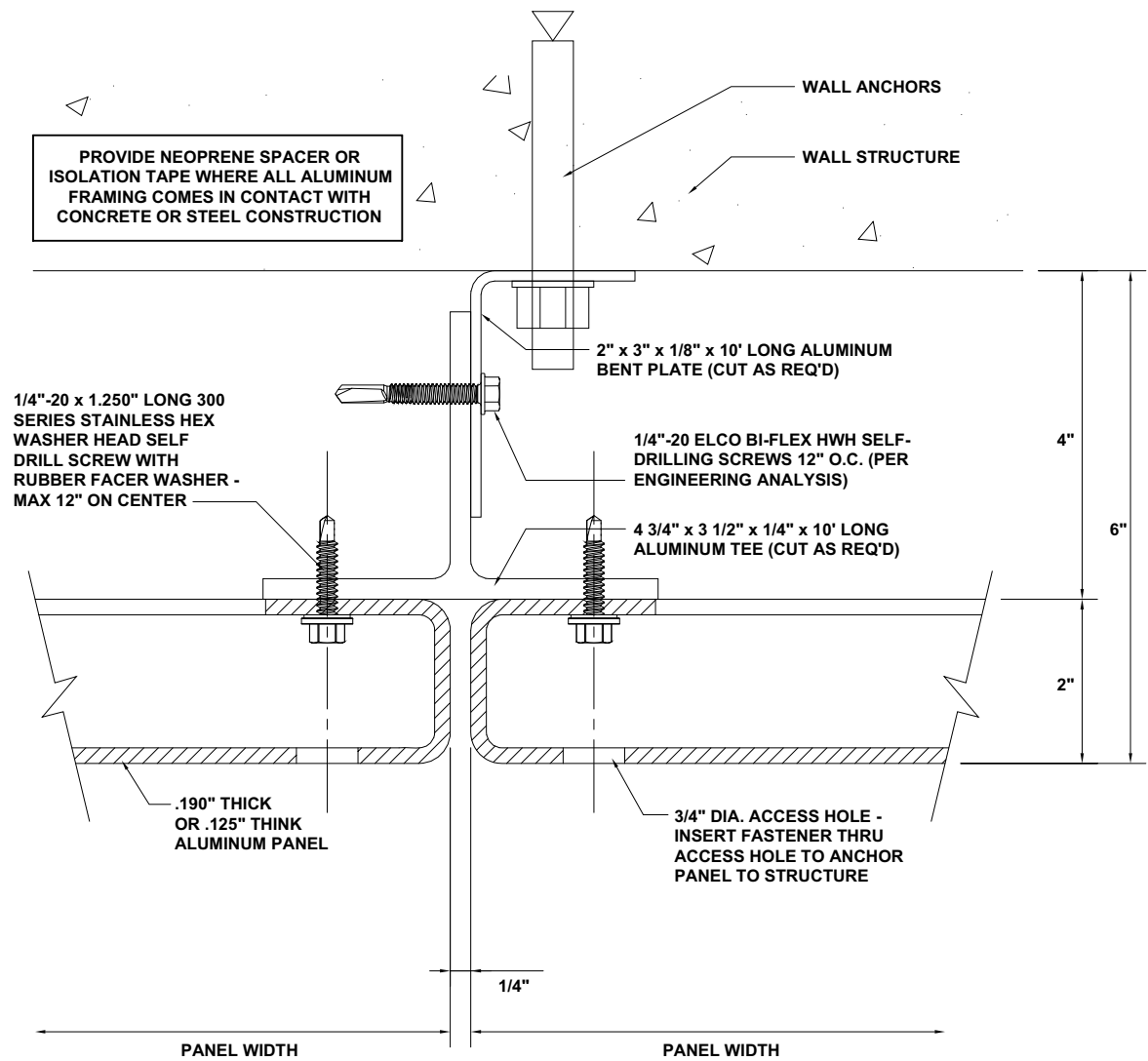
FAUX GREEN WALL MOUNTING DETAIL:



FAUX GREEN WALL MOUNTING  
DETAIL

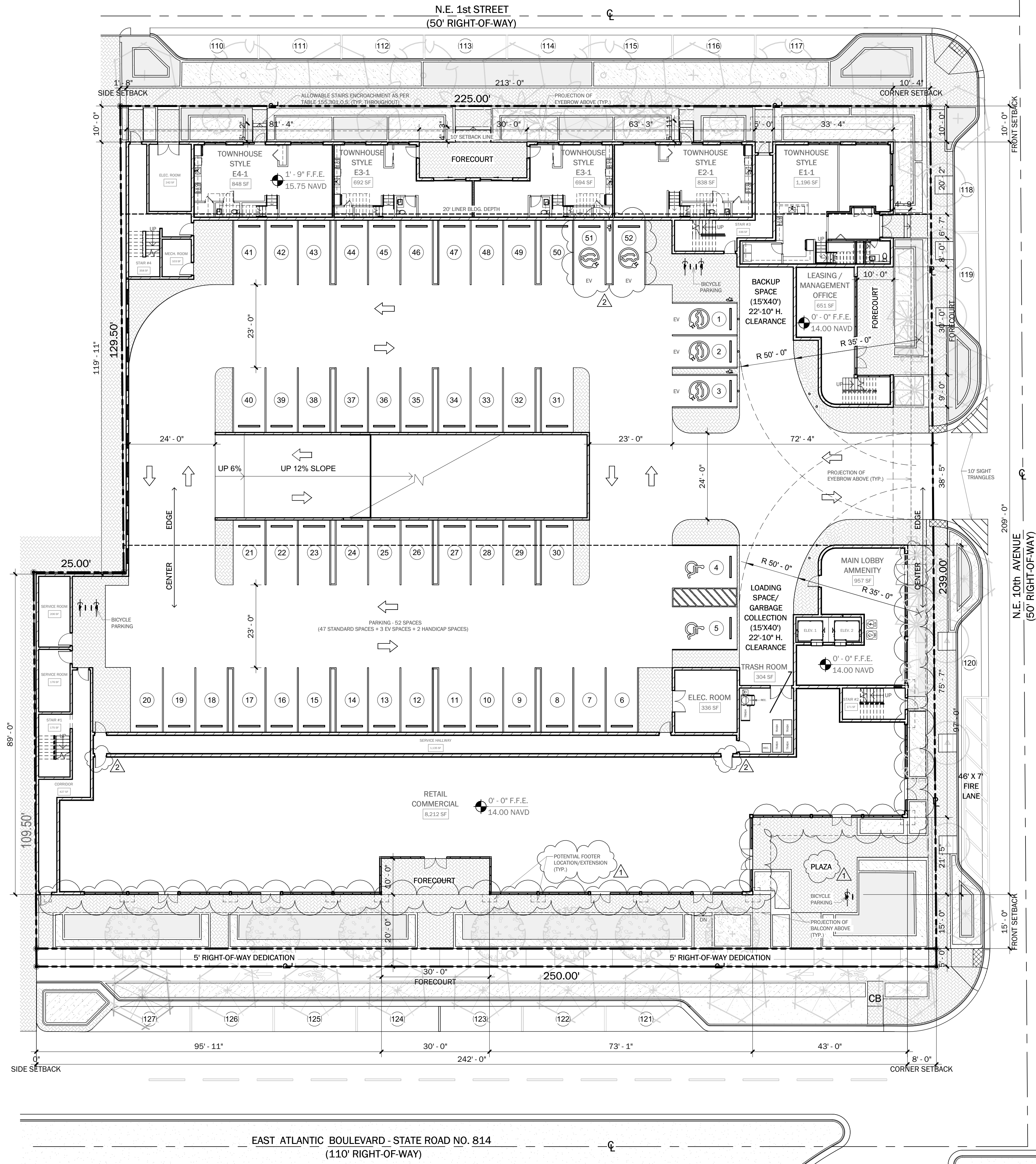
3  
A2.1 SCALE: 3" = 1'-0"

PERFORATED PANEL MOUNTING DETAIL:



PERFORATED PANEL DETAIL

4  
A2.1 SCALE: 3" = 1'-0"



PROPOSED GROUND LEVEL  
PLAN

1  
A2.1 SCALE: 1/16" = 1'-0"

AAC

PZ23-12000043  
04/02/2024

Digitally  
signed by  
Steven L.  
Cohen  
Date:  
2024.03.05  
16:50:38  
-05'00'

SEAL:  
STEVEN L. COHEN AND ASSOCIATES, P.A.  
LICENSE NO.: 6823

Steven L. Cohen  
and Associates, P.A.  
Architects - Interior Designers  
5995 TOWN CENTER ROAD, SUITE 202  
BOCA RATON, FLORIDA 33486  
P: (954) 971-1010  
E: info@slcarchitects.com

PROJECT NAME:  
911 EAST ATLANTIC  
MIXED-USE PROJECT  
PROJECT ADDRESS:  
911 EAST ATLANTIC BLVD, POMPAHO BEACH, FL 33060

DRAWING NAME:  
PROPOSED GROUND LEVEL PLAN  
ALL IDEAS, INVENTIONS AND PLANS INDICATED OR REPRESENTED BY THIS DRAWING ARE OWNED BY AND THE SUBMITTER TO THE OFFICE  
FOR APPROVAL BEFORE PROCEEDING WITH INFORMATION ON THIS DRAWING. WITH THE EXCEPTED PROJECT, NONE OF SUCH INFORMATION  
SHALL BE OR BE DISCLOSED TO ANY PERSON, FIRM OR CORPORATION FOR ANY PURPOSE, WHATEVER WITHOUT THE WRITTEN CONSENT OF THIS  
OFFICE. CONTRACTORS SHALL VERIFY AND BE RESPONSIBLE FOR ALL DIMENSIONS AND LOCATIONS ON THE JOB AND THIS OFFICE SHALL BE NOTIFIED  
OF ANY VARIATIONS FROM THE DIMENSIONS AND LOCATIONS SHOWN ON THESE DRAWINGS. SHOP DETAILS OF APPLICABLE SCALE MUST BE  
SUBMITTED TO THE OFFICE OF APPROVAL BEFORE PROCEEDING WITH INFORMATION ON THIS DRAWING.

Principal: SLC  
Project Manager: SDY  
Drawn by: JQ/VB

REVISIONS  
No DATE DESCRIPTION:  
11.15.23 DRC COMMENTS  
02.21.24 DRC COMMENTS

Project No: 12622  
Issue Date:  
03/05/2024  
Drawing No:  
A2.1